

**AERODROME GROUND
MOVEMENT CHART - ICAO**

APRON ELEV 6 m

| | | |
|-------|-----------|----------|
| TWR | 118.2(E) | 118.8(W) |
| GND | 121.75(E) | 121.7(W) |
| APRON | 121.65 | 122.175 |
| | 121.8 | 123.325 |

**SEOUL / Incheon Intl
RWY 15L/R, 33L/R DEPARTURE**

ELEVATIONS AND DIMENSION IN METERS
BEARINGS ARE MAGNETIC



ANNUAL RATE OF CHANGE
6' W

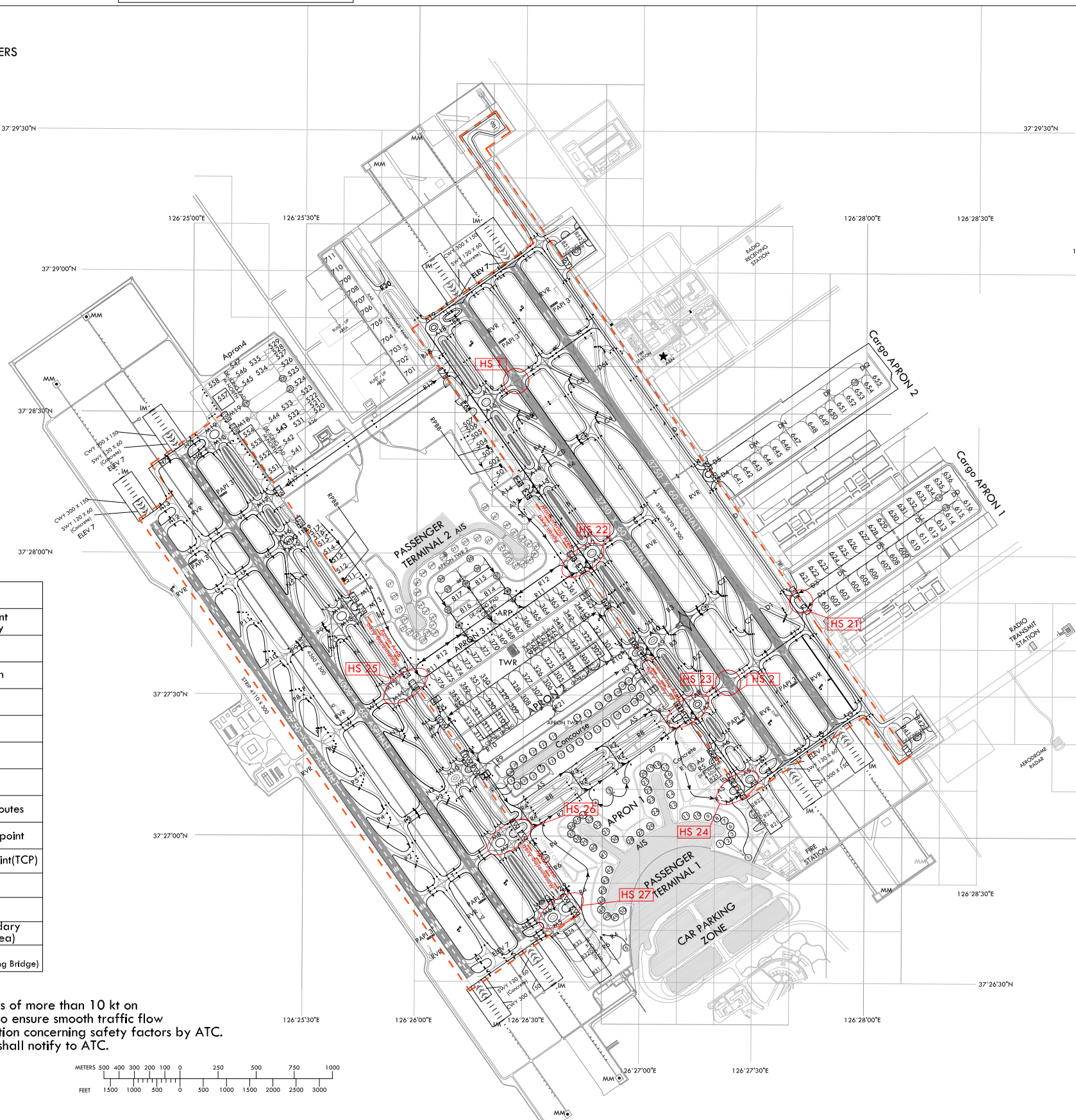
| | |
|------------------|------------------------------------------------------------------------------------------------------------------------------------------------------------------------------------------------------------|
| HS 1 | AIRCRAFT TAXIING ON TAXIWAY K FROM RUNWAY 33R AFTER LANDING USE CAUTION WHEN ATC UTILIZES RUNWAY 33L FOR TAKEOFFS. DO NOT CROSS THE HOLDING MARKING FOR RUNWAY 33L WITHOUT ATC AUTHORIZATION. |
| HS 2 | AIRCRAFT TAXIING ON TAXIWAY J FROM RUNWAY 15L AFTER LANDING USE CAUTION WHEN ATC UTILIZES RUNWAY 15R FOR TAKEOFFS. DO NOT CROSS THE HOLDING MARKING FOR RUNWAY 15R WITHOUT ATC AUTHORIZATION. |
| HS 21~23, 25, 26 | USE CAUTION OF CONFUSION ON TAXIWAYS. DO NOT PROCEED TAXIING BEYOND TRANSFER OF CONTROL POINTS WITHOUT CLEARANCE FROM INCHEON APRON OR GROUND(TOWER). |
| HS 24, 27 | USE CAUTION OF CONFUSION ON TAXIWAYS. DO NOT PROCEED TAXIING BEYOND TRANSFER OF CONTROL POINTS WITHOUT CLEARANCE FROM INCHEON APRON OR GROUND(TOWER). AND DO NOT MOVE WHEN SAFETY DISTANCE IS NOT ASSURED. |

Note 1
When non-standard taxi routes are applicable, Incheon APRON will issue transition taxi instructions one to another taxi lane in APRON 2, APRON 3, APRON 4 and Cargo APRONS.

Note 2
Aircraft shall not taxi into maneuvering area without clearance from Incheon Tower or Ground.

| LEGEND | |
|-----------|-----------------------------------------|
| WNG 112.9 | VOR check-point and frequency |
| ••• | Stop-bar light |
| 54R | Holding position |
| R4 | Taxi lane |
| 50 | Gate |
| 301 | Remote stand |
| → | Taxi routes |
| → | De-icing pad taxi routes |
| 3 | Powered taxi-start point |
| IE | Transfer of control point(TCP) |
| — | Open channel |
| ○ | Hot spot |
| --- | ATC service boundary (Maneuvering area) |
| — | RPBB (Remote Passenger Boarding Bridge) |

Note
All aeroplane will taxi at speeds of more than 10 kt on Taxiways A, B, C, D, M, N or P to ensure smooth traffic flow unless there is exceptional direction concerning safety factors by ATC. And if it is impracticable, pilots shall notify to ATC.



| | SURFACE | WIDTH | STRENGTH |
|----------|----------|-------------------------------------------|----------------|
| APRON | Concrete | - | PCN 86/R/B/X/T |
| | | | PCN 85/R/B/X/T |
| TWY A, D | Concrete | 30 m Shoulder : 15 m | PCN 86/R/B/X/T |
| TWY B, C | Asphalt | Paved : 12 m - Turfed : 3 m | PCN 88/F/B/X/T |
| TWY M | Concrete | 30 m Shoulder : 15 m - Paved : 15 m | PCN 85/R/B/X/T |
| TWY N | Asphalt | | PCN 75/F/B/X/T |
| TWY P | Asphalt | | PCN 75/F/B/X/T |

Taxiway edge lights on all taxiways curve area
Taxiway center line lights on all taxiways
PAX Terminal and Concourse A VDGS equipped

Change : Information of stop-bar light.

**AERODROME GROUND
MOVEMENT CHART - ICAO** APRON ELEV 6 m

| | | |
|-------|-----------|----------|
| TWR | 118.2(E) | 118.8(W) |
| GND | 121.75(E) | 121.7(W) |
| APRON | 121.65 | 122.175 |
| | 123.675 | 121.8 |
| | | 123.325 |

**SEOUL / Incheon Intl
RWY 15L/R, 33L/R ARRIVAL**

ELEVATIONS AND DIMENSION IN METERS
BEARINGS ARE MAGNETIC



ANNUAL RATE OF CHANGE
6' W

| | |
|------------------|------------------------------------------------------------------------------------------------------------------------------------------------------------------------------------------------------------|
| HS 1 | AIRCRAFT TAXIING ON TAXIWAY K FROM RUNWAY 33R AFTER LANDING USE CAUTION WHEN ATC UTILIZES RUNWAY 33L FOR TAKEOFFS. DO NOT CROSS THE HOLDING MARKING FOR RUNWAY 33L WITHOUT ATC AUTHORIZATION. |
| HS 2 | AIRCRAFT TAXIING ON TAXIWAY J FROM RUNWAY 15L AFTER LANDING USE CAUTION WHEN ATC UTILIZES RUNWAY 15R FOR TAKEOFFS. DO NOT CROSS THE HOLDING MARKING FOR RUNWAY 15R WITHOUT ATC AUTHORIZATION. |
| HS 21~23, 25, 26 | USE CAUTION OF CONFUSION ON TAXIWAYS. DO NOT PROCEED TAXIING BEYOND TRANSFER OF CONTROL POINTS WITHOUT CLEARANCE FROM INCHEON APRON OR GROUND(TOWER). |
| HS 24, 27 | USE CAUTION OF CONFUSION ON TAXIWAYS. DO NOT PROCEED TAXIING BEYOND TRANSFER OF CONTROL POINTS WITHOUT CLEARANCE FROM INCHEON APRON OR GROUND(TOWER). AND DO NOT MOVE WHEN SAFETY DISTANCE IS NOT ASSURED. |

Note 1
All aeroplane will taxi at speeds of more than 10 kt on Taxiways A, B, C, D, M, N or P to ensure smooth traffic flow unless there is exceptional direction concerning safety factors by ATC. And if it is impracticable, pilots shall notify to ATC.

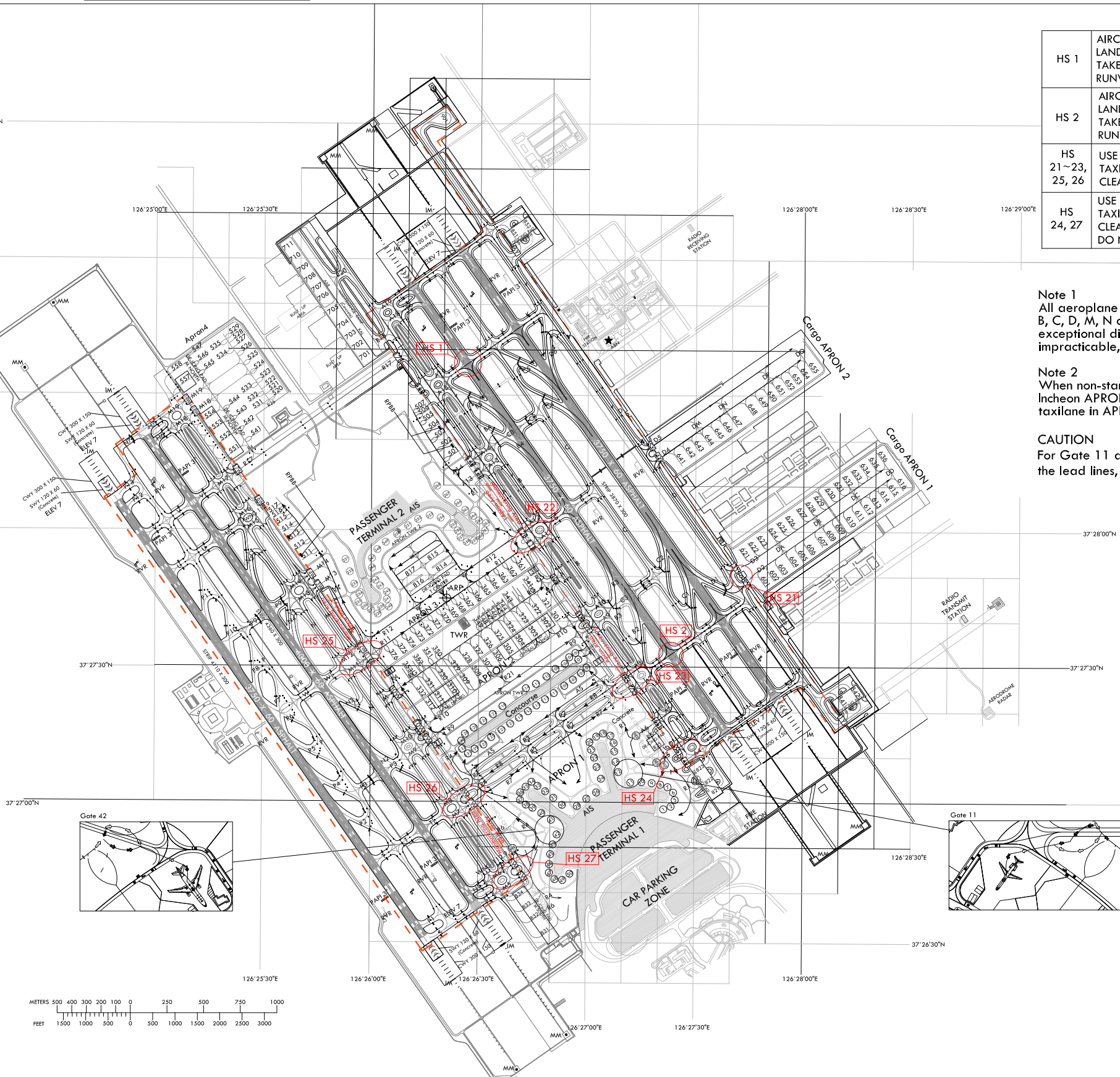
Note 2
When non-standard taxi routes are applicable, Incheon APRON will issue transition taxi instructions one to another taxiway in APRON 2, APRON 3, APRON 4 and Cargo APRONS.

CAUTION
For Gate 11 and 42, pilots needs to pay extra caution to follow the lead lines, which may require more than two turns.

| | | SURFACE | WIDTH | STRENGTH |
|----------|--------------------------------------------------|-----------------------------------------------------------|----------------|----------------|
| APRON | Apron 1, 2 Cargo Apron 1 Maintenance Apron | Concrete | - | PCN 86/R/B/X/T |
| | Apron 3, 4 Cargo Apron 2 | Concrete | - | PCN 85/R/B/X/T |
| TWY A, D | Concrete | 30 m Shoulder: 1.5 m - Paved: 12 m - Turfed: 3 m | PCN 86/R/B/X/T | |
| TWY B, C | Asphalt | | PCN 88/F/B/X/T | |
| TWY M | Concrete | | PCN 85/R/B/X/T | |
| TWY N | Asphalt | 30 m Shoulder: 1.5 m - Paved: 1.5 m | PCN 75/F/B/X/T | |
| TWY P | Asphalt | | PCN 75/F/B/X/T | |

Taxiway edge lights on all taxiways curve area
Taxiway center line lights on all taxiways
PAX Terminal and Concourse A VDGS equipped

| LEGEND | |
|-----------|-----------------------------------------|
| WNG 112.9 | VOR check-point and frequency |
| ● ● ● | Stop-bar light |
| 548 | Holding position |
| R4 | Taxi lane |
| 50 | Gate |
| 301 | Remote stand |
| → | Taxi routes |
| → | Alternate Taxi routes |
| 1E | Transfer of control point(TCP) |
| — | Open channel |
| ○ | Hot spot |
| ⋯ | ATC service boundary (Maneuvering area) |
| — | RPBB (Remote Passenger Boarding Bridge) |



Change : Information of stop-bar light.

**AERODROME GROUND
MOVEMENT CHART - ICAO** APRON ELEV 6 m

| | | |
|-------|-----------|----------|
| TWR | 118.2(E) | 118.8(W) |
| GND | 121.75(E) | 121.7(W) |
| APRON | 121.65 | 122.175 |
| | 123.675 | 121.8 |
| | | 123.325 |

**SEOUL / Incheon Intl
RWY 16L/R, 34L/R DEPARTURE**

| | |
|--------------------|------------------------------------------------------------------------------------------------------------------------------------------------------------------------------------------------------------|
| HS 1 | AIRCRAFT TAXIING ON TAXIWAY K FROM RUNWAY 33R AFTER LANDING USE CAUTION WHEN ATC UTILIZES RUNWAY 33L FOR TAKEOFFS. DO NOT CROSS THE HOLDING MARKING FOR RUNWAY 33L WITHOUT ATC AUTHORIZATION. |
| HS 2 | AIRCRAFT TAXIING ON TAXIWAY J FROM RUNWAY 15L AFTER LANDING USE CAUTION WHEN ATC UTILIZES RUNWAY 15R FOR TAKEOFFS. DO NOT CROSS THE HOLDING MARKING FOR RUNWAY 15R WITHOUT ATC AUTHORIZATION. |
| HS 21 ~ 23, 25, 26 | USE CAUTION OF CONFUSION ON TAXIWAYS. DO NOT PROCEED TAXIING BEYOND TRANSFER OF CONTROL POINTS WITHOUT CLEARANCE FROM INCHEON APRON OR GROUND(TOWER). |
| HS 24, 27 | USE CAUTION OF CONFUSION ON TAXIWAYS. DO NOT PROCEED TAXIING BEYOND TRANSFER OF CONTROL POINTS WITHOUT CLEARANCE FROM INCHEON APRON OR GROUND(TOWER). AND DO NOT MOVE WHEN SAFETY DISTANCE IS NOT ASSURED. |

Note 1
When non-standard taxi routes are applicable, Incheon APRON will issue transition taxi instructions one to another taxi lane in APRON 2, APRON 3, APRON 4 and Cargo APRONS.

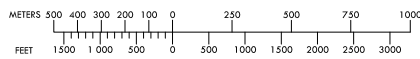
Note 2
Aircraft shall not taxi into maneuvering area without clearance from Incheon Tower or Ground.

ELEVATIONS AND DIMENSION IN METERS
BEARINGS ARE MAGNETIC

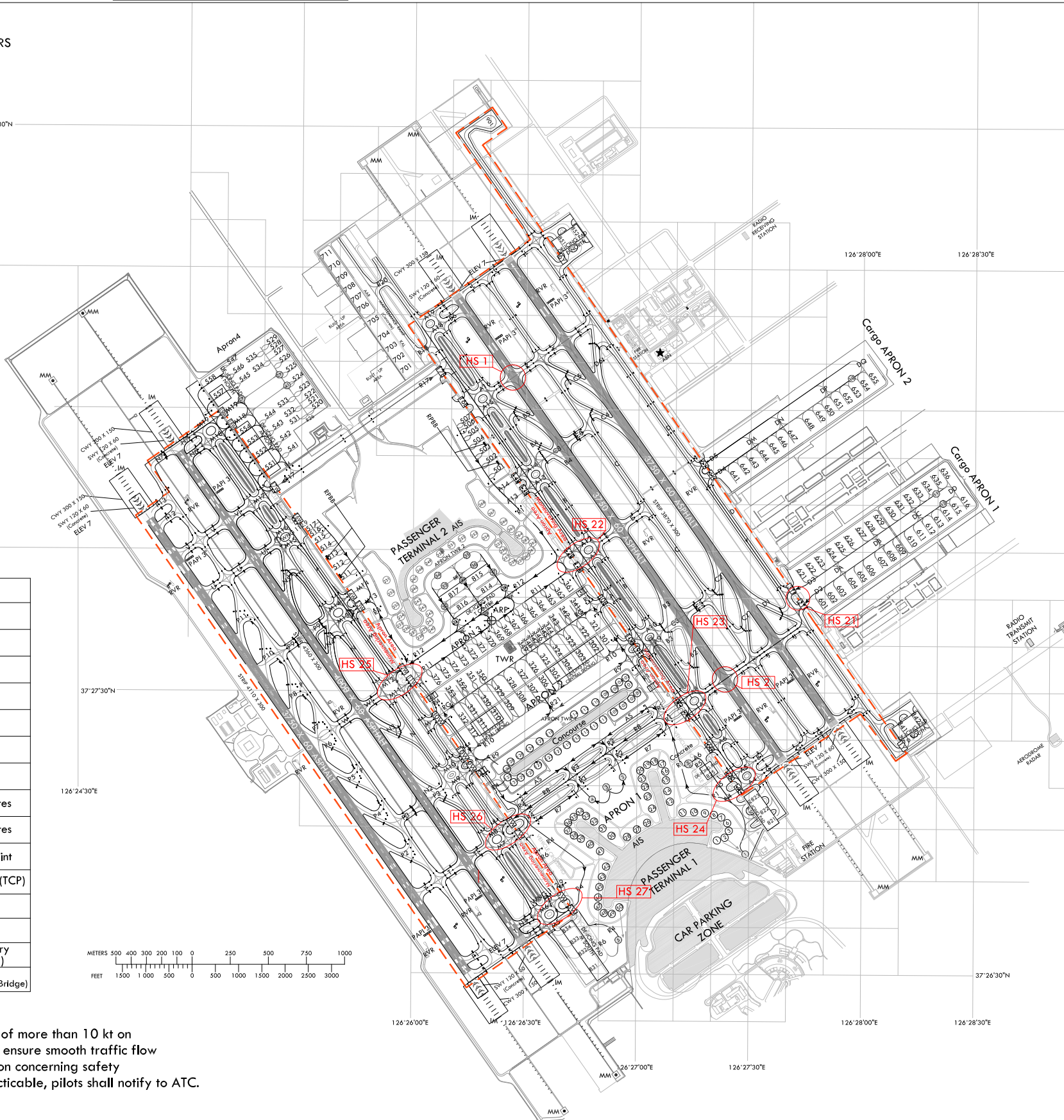


ANNUAL RATE OF CHANGE
6" W

| LEGEND | |
|-----------|-----------------------------------------|
| WNG 112.9 | VOR check-point and frequency |
| ••• | Stop-bar light |
| (S4R) | Holding position |
| R4 | Taxi lane |
| (50) | Gate |
| 301 | Remote stand |
| → | Taxi routes |
| → | De-icing pad taxi routes |
| → | Alternate Taxi routes |
| (3) | Powered taxi-start point |
| (TE) | Transfer of control point(TCP) |
| — | Open channel |
| ○ | Hot spot |
| --- | ATC service boundary (Maneuvering area) |
| ■ | RPBB (Remote Passenger Boarding Bridge) |



Note
All aeroplane will taxi at speeds of more than 10 kt on Taxiways A, B, C, D, M, N or P to ensure smooth traffic flow unless there is exceptional direction concerning safety factors by ATC. And if it is impracticable, pilots shall notify to ATC.



| | SURFACE | WIDTH | STRENGTH |
|----------|--------------------------------------------------|---------------------------------|----------------|
| APRON | Apron 1, 2 Cargo Apron 1 Maintenance Apron | Concrete | PCN 86/R/B/X/T |
| | Apron 3, 4 Cargo Apron 2 | Concrete | PCN 85/R/B/X/T |
| TWY A, D | Concrete | 30 m Shoulder: 1.5 m | PCN 86/R/B/X/T |
| TWY B, C | Asphalt | - Paved: 1.2 m - Turfed: 3 m | PCN 88/F/B/X/T |
| TWY M | Concrete | | PCN 85/R/B/X/T |
| TWY N | Asphalt | 30 m Shoulder: 1.5 m | PCN 75/F/B/X/T |
| TWY P | Asphalt | | PCN 75/F/B/X/T |

Taxiway edge lights on all taxiways curve area
Taxiway center line lights on all taxiways
PAX Terminal and Concourse A VDGS equipped

Change : Information of stop-bar light.

**AERODROME GROUND
MOVEMENT CHART - ICAO**

APRON ELEV 6 m

| | | |
|-------|-----------|----------|
| TWR | 118.2(E) | 118.8(W) |
| GND | 121.75(E) | 121.7(W) |
| APRON | 121.65 | 122.175 |
| | 121.8 | 123.325 |

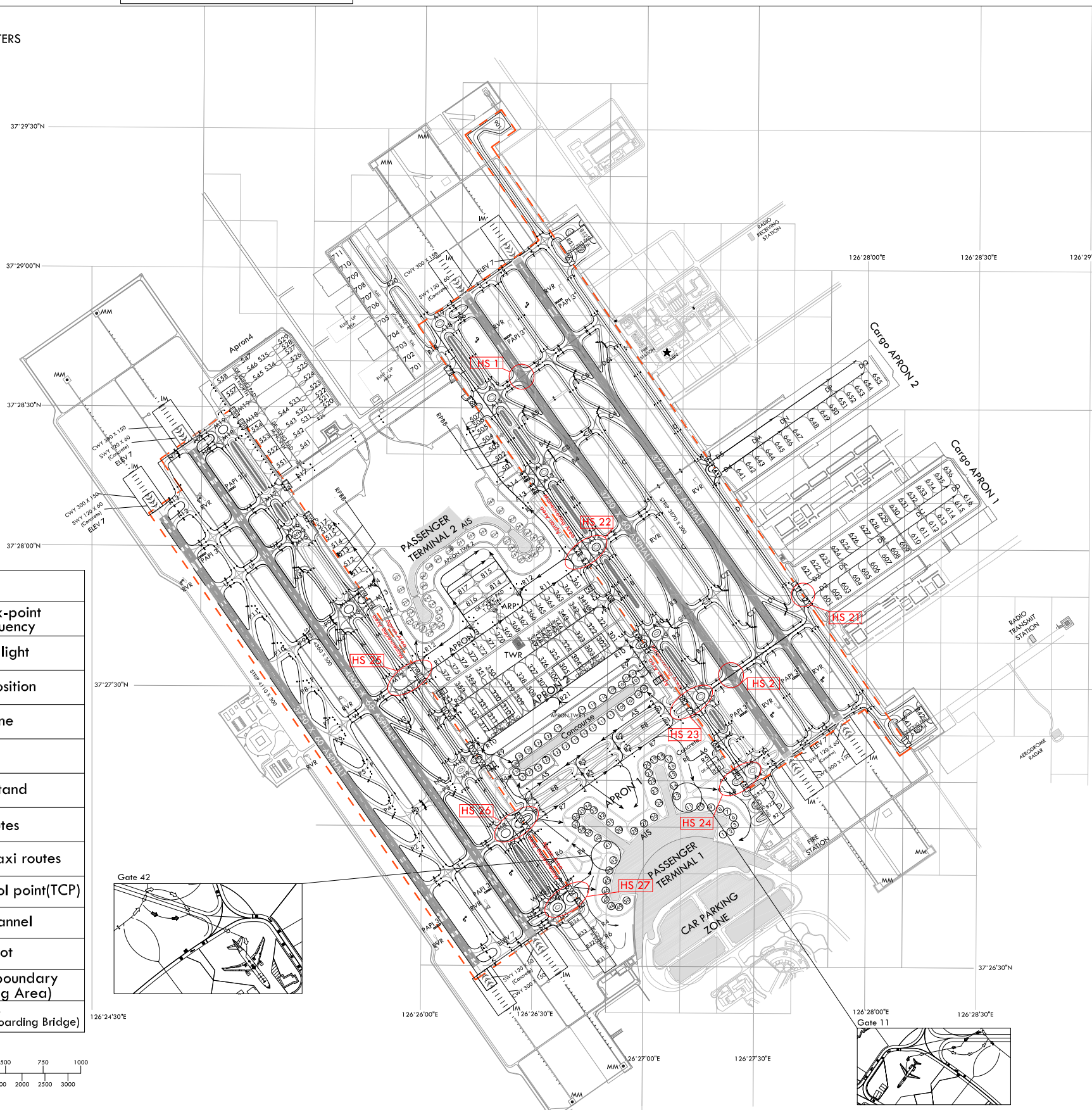
**SEOUL / Incheon Intl
RWY 16L/R, 34L/R ARRIVAL**

ELEVATIONS AND DIMENSION IN METERS
BEARINGS ARE MAGNETIC



ANNUAL RATE OF CHANGE
6' W

| LEGEND | |
|-----------|-----------------------------------------|
| WNG 112.9 | VOR check-point and frequency |
| • • • | Stop-bar light |
| 54R | Holding position |
| R4 | Taxi lane |
| 50 | Gate |
| 301 | Remote stand |
| → | Taxi routes |
| -> | Alternate taxi routes |
| 1E | Transfer of control point(TCP) |
| | Open channel |
| | Hot spot |
| | ATC service boundary (Maneuvering Area) |
| | RPBB (Remote Passenger Boarding Bridge) |



| | |
|------------------|------------------------------------------------------------------------------------------------------------------------------------------------------------------------------------------------------------|
| HS 1 | AIRCRAFT TAXIING ON TAXIWAY K FROM RUNWAY 33R AFTER LANDING USE CAUTION WHEN ATC UTILIZES RUNWAY 33L FOR TAKEOFFS. DO NOT CROSS THE HOLDING MARKING FOR RUNWAY 33L WITHOUT ATC AUTHORIZATION. |
| HS 2 | AIRCRAFT TAXIING ON TAXIWAY J FROM RUNWAY 15L AFTER LANDING USE CAUTION WHEN ATC UTILIZES RUNWAY 15R FOR TAKEOFFS. DO NOT CROSS THE HOLDING MARKING FOR RUNWAY 15R WITHOUT ATC AUTHORIZATION. |
| HS 21~23, 25, 26 | USE CAUTION OF CONFUSION ON TAXIWAYS. DO NOT PROCEED TAXIING BEYOND TRANSFER OF CONTROL POINTS WITHOUT CLEARANCE FROM INCHEON APRON OR GROUND(TOWER). |
| HS 24, 27 | USE CAUTION OF CONFUSION ON TAXIWAYS. DO NOT PROCEED TAXIING BEYOND TRANSFER OF CONTROL POINTS WITHOUT CLEARANCE FROM INCHEON APRON OR GROUND(TOWER). AND DO NOT MOVE WHEN SAFETY DISTANCE IS NOT ASSURED. |

Note 1
All aeroplane will taxi at speeds of more than 10 kt on Taxiways A, B, C, D, M, N or P to ensure smooth traffic flow unless there is exceptional direction concerning safety factors by ATC. And if it is impracticable, pilots shall notify to ATC.

Note 2
When non-standard taxi routes are applicable, Incheon APRON will issue transition taxi instructions one to another taxilane in APRON 2, APRON 3, APRON 4 and Cargo APRONS.

CAUTION
For Gate 11 and 42, pilots needs to pay extra caution to follow the lead lines, which may require more than two turns.

| | SURFACE | WIDTH | STRENGTH |
|----------|--------------------------------------------------|-----------------------------------------------------|----------------|
| APRON | Apron 1, 2 Cargo Apron 1 Maintenance Apron | Concrete | - |
| | Apron 3, 4 Cargo Apron 2 | Concrete | PCN 85/R/B/X/T |
| TWY A, D | Concrete | 30 m | PCN 86/R/B/X/T |
| TWY B, C | Asphalt | Shoulder : 15 m - Paved : 12 m - Turfed : 3 m | PCN 88/F/B/X/T |
| TWY M | Concrete | 30 m | PCN 85/R/B/X/T |
| TWY N | Asphalt | Shoulder : 15 m - Paved : 15 m | PCN 75/F/B/X/T |
| TWY P | Asphalt | 30 m | PCN 75/F/B/X/T |

Taxiway edge lights on all taxiways curve area
Taxiway center line lights on all taxiways
PAX Terminal and Concourse A VDGS equipped

Change : Information of stop-bar light.